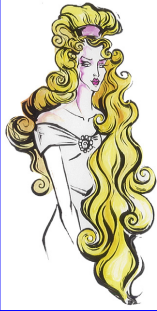


Recommended Reader Assignment

FOR TEACHER'S USE ONLY - NOT FOR STUDENT USE



Rapunzel

A timeless tale presented in....

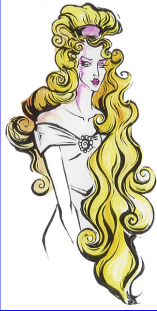
Playbook® Format



Reader No.	Story Character	Group 1 Reader	Group 2 Reader	Group 3 Reader	Group 4 Reader	Group 5 Reader
1	RAPUNZEL <i>Speaks 48 times</i> <i>26% of story</i>					
2	WITCH <i>Speaks 38 times</i> <i>22% of story</i>					
3	PRINCE <i>Speaks 38 times</i> <i>13% of story</i> FARMER <i>Speaks 10 times</i> <i>2% of story</i>					
4	HAIRDRESSER <i>Speaks 26 times</i> <i>13% of story</i> FARMER'S WIFE <i>Speaks 8 times</i> <i>4% of story</i>					
5	NARRATOR <i>Speaks 24 times</i> <i>20% of story</i>					

Recommended Reader Assignment

FOR TEACHER'S USE ONLY - NOT FOR STUDENT USE



Rapunzel

A timeless tale presented in....

Playbook® Format



Reader No.	Story Character	Group 1 Reader	Group 2 Reader	Group 3 Reader	Group 4 Reader	Group 5 Reader
1	RAPUNZEL <i>Speaks 48 times 26% of story</i>					
2	WITCH <i>Speaks 38 times 22% of story</i>					
3	PRINCE <i>Speaks 38 times 13% of story</i> FARMER <i>Speaks 10 times 2% of story</i>					
4	HAIRDRESSER <i>Speaks 26 times 13% of story</i> FARMER'S WIFE <i>Speaks 8 times 4% of story</i>					
5	NARRATOR 1 <i>Speaks 12 times 10% of story (alternates lines with Narrator 2)</i>					
6	NARRATOR 2 <i>Speaks 12 times 10% of story (alternates lines with Narrator 1)</i>					

To download and print additional copies of this page, visit www.playbooks.com/rra.htm

© 2007, Playbooks, Inc., Ladera Ranch, CA