

# Recommended Reader Assignment

FOR TEACHER'S USE ONLY - NOT FOR STUDENT USE

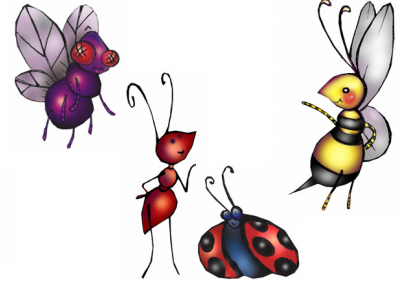


## Bug Off!

An Original Playbook®

Presented in....

Playbook™ Advantage Format



Reader No.	Story Character	Group 1 Reader	Group 2 Reader	Group 3 Reader	Group 4 Reader	Group 5 Reader
1	<b>Bee</b> <i>Speaks 27 times</i> <i>13% of story</i> <b>Stage 1 - Early Reader</b>					
2	<b>Ant</b> <i>Speaks 29 times</i> <i>13% of story</i> <b>Stage 1 - Early Reader</b>					
3	<b>Fly</b> <i>Speaks 37 times</i> <i>19% of story</i> <b>Stage 2 - Beginning Reader</b>					
4	<b>Matt</b> <i>Speaks 36 times</i> <i>23% of story</i> <b>Stage 2 - Beginning Reader</b>					
5	<b>Ladybug</b> <i>Speaks 40 times</i> <i>25% of story</i> <b>Stage 3 - Transitional Reader</b>					
All	<b>All</b> (read by all bugs together) <i>Speak 9 times</i> <i>7% of story</i> <b>Stage 2 - Beginning Reader</b>	All Readers	All Readers	All Readers	All Readers	All Readers

To download and print additional copies of this page, visit [www.playbooks.com/rra.htm](http://www.playbooks.com/rra.htm)

© 2007, Playbooks, Inc., Ladera Ranch, CA